

## What are the side effects of Renacet®?

Like all medicines, Renacet® can cause side effects although not everybody gets them. The side effects that patients might notice are Gastro-intestinal (GI) symptoms. Up to 1 per 1,000 patients experience some (GI) side effects e.g. feeling sick or constipation. There is more information about side effects in the leaflet in the pack.

## Reporting of side effects

If you get any side effects, talk to your doctor, pharmacist, dietitian, or nurse. This includes any possible side effects not listed in the package leaflet. You can also report side effects directly via the Yellow Card Scheme at [www.mhra.gov.uk/yellowcard](http://www.mhra.gov.uk/yellowcard)

### Notes

Renacet® is a prescription product and only available from a pharmacy:

Renacet® 475mg 200 tablet pack only

Renacet® 950mg 200 tablet pack only

For patients who have been prescribed

# Renacet®

Film-coated calcium acetate tablets

A more detailed patient information leaflet is inside each box of Renacet® tablets.

Please read it carefully.



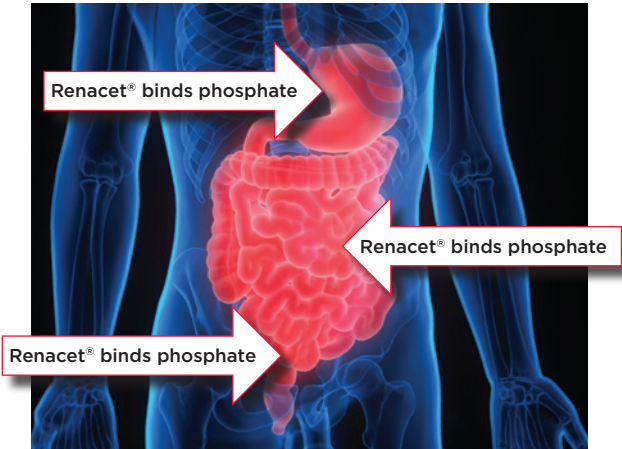
Tablets not actual size.



If you require any information from the supplier:  
visit [www.stanningleypharma.co.uk](http://www.stanningleypharma.co.uk)  
email [info@stanningleypharma.co.uk](mailto:info@stanningleypharma.co.uk)  
Call Stanningley Pharma Ltd on **0115 9124253**

November 2017 Code: Renacet.nov.2017.2

# HELPING TO CONTROL YOUR PHOSPHATE LEVELS



One of the consequences of chronic kidney disease (CKD) is raised levels of phosphate in the blood. Managing your phosphate levels through diet and the use of phosphate binding medicine can help to lower the level of phosphate in your blood.

## What is Renacet®?

Renacet® is a phosphate binder, and like all binders, it combines with phosphate in the food along the length of the gut. This reduces the total amount of phosphate entering the blood system.

## When to take Renacet®?

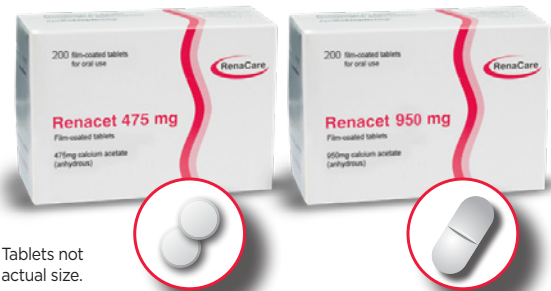
Renacet® should be taken during or immediately after a meal. Tablets should be swallowed with some liquid and must not be chewed.

Renacet® can reduce the absorption of other medicines so you should allow 1-2 hours between the intake of Renacet® and other medicines.

# WHAT ARE THE OPTIONS?

Renacet® 475  
Calcium acetate

Renacet® 950  
Calcium acetate



## What is the dose of Renacet®?

The dose of Renacet® varies from patient to patient, and also needs to be adjusted to the amount of phosphate in any one meal. Always take the dose that has been prescribed for you.

Your doses are shown below:

Adult	Renacet® 475/ Renacet® 950	Notes
Breakfast	___ tablets	
Snack	___ tablets	
Main Meal	___ tablets	
Supper	___ tablets	